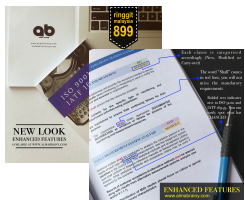


IATF 16949 REFRESHER SERIES

ISO9001
requirements
are included **FOC**



the most comprehensive package



- 5 core tolls series are designed to focus on frequently asked questions by auditors, basic notes and lectures are skipped and focus on key concepts so the number of training days can be reduced by half.
- ISO and IATF requirements are delivered in pictorial and grafical form for better understanding. No more going through the standard line by line.
- Validation of all 18 Documented Process + Documented System as required in IATF 16949.
- Review all 11 mandatory records in IATF 16949.
- Evaluation of all 16 mandatory documented information as required by IATF 16949.
- Mapping all new and modified elements of ISO9001 and IATF 16949.

FREE!!! See page 9

THIS PACKAGE CONSIST OF 6 COURSES...



info@albrainy.com
www.alma brainy.com





BOOK NOW!
info@albrainy.com

a quick overview of
key **deliverables**
from each course

www.albrainy.com

SYNOPSIS

7.1.5.1.1 MEASUREMENT SYSTEM ANALYSIS

IATF
MODIFIED

Statistical studies **shall** be conducted to analyse the variation present in the results of each type of **inspection**, measurement, and test equipment system **identified** in the control plan. The analytical methods and acceptance criteria used shall conform to those in reference manuals on Measurement Systems Analysis. Other analytical methods and acceptance criteria may be used if approved by the customer.

Records of customer acceptance of alternative methods shall be retained along with results from alternative measurement systems analysis (see section 9.1.1.1)

Note: Prioritization of MSA studies should focus on critical or special product or process characteristics



Clause Categorisation

- For better understanding each clause has been categorised as the following:-
 - Carry forward from previous standard.
 - Modified clauses from previous standard.
 - Newly introduced clause.

Mandatory

The word "shall" is printed in red. By just a glimpse you'll will notice what has been stressed as "mandatory" in the standard.

Bolded Text

- Some wordings are printed in bold.
- This indicates additional and/or new requirements added into the the standard.

Pictorial Explanation

Alma Brainsy Training Academy | info@albrainy.com 33

Clause 6.1.2.3 – Contingency Plan (IATF)

Internal and external risk to be identified in order to **maintain production output** and to ensure that **customer requirements** are met;

Mfg process & infrastructure equipment

Output/Supply

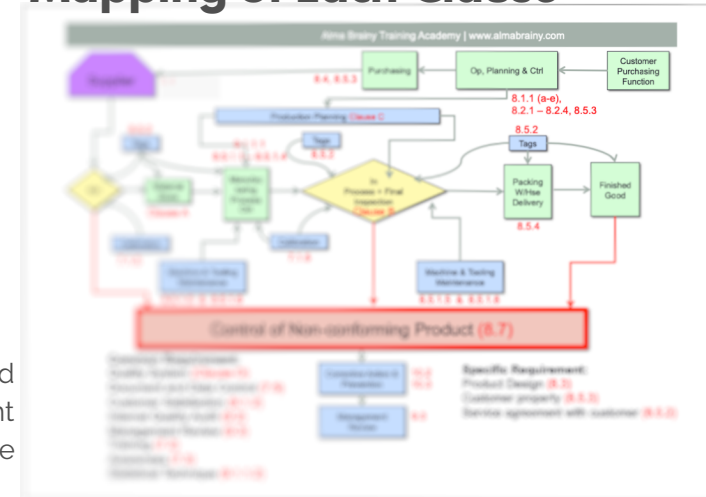
Organization Shall:-

- Based on risk and impact to the customer.
- Inform customer & interested parties to what extent and duration they will be impacted.
- Periodically test the contingency plans for effectiveness.
- Multidisciplinary team including top management shall review contingency plan (at min annually) and update as required.
- Document the contingency plans and retain DOCUMENTED INFORMATION describing any revision(s), including the person(s) who authorized the change(s).
- Validate the manufactured product after the re-start of production following an emergency.

The lengthy wording from the standard has been transformed into pictorial and graphical explanation for easy understanding .

Each clause is mapped with its relevant operation in in the entire manufacturing process

Mapping of Each Clause



SYNOPSIS

IATF AND ISO REQUIREMENTS

2.5-day course

in-house

0900-1700

25pax (max)

OVERVIEW

- ISO and IATF is combined into 2.5 days course.
- Reduction in training days is possible due to the standard has been summarized in pictorial form rather than going through the standard line by line.
- Focus given on clauses that is prone to NC findings.
- Best practices are shared during the session.
- **Claim your FREE gift upon enrolling. See Page 9**

KEY DELIVERABLES


Alma Brainy Training Academy | www.almabrainy.com 136

7.1.5.1.1 MEASUREMENT SYSTEM ANALYSIS IATF MODIFIED

Statistical studies **shall** be conducted to analyse the variation present in the results of each type of **inspection**, measurement, and test equipment system **identified** in the control plan. The analytical methods and acceptance criteria used shall conform to those in reference manuals on Measurement Systems Analysis. Other analytical methods and acceptance criteria may be used if approved by the customer.

Records of customer acceptance of alternative methods shall be retained along with results from alternative measurement systems analysis (see section 9.1.1.1)

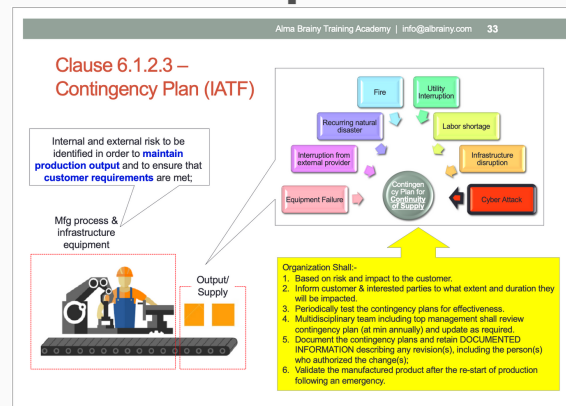
Note: Prioritization of MSA studies should focus on critical or special product or process characteristics



Mandatory

The word "shall" is printed in red. By just a glimpse you'll will notice what has been stressed as "mandatory" in the standard.

Pictorial Explanation



The lengthy wording from the standard has been transformed into pictorial and graphical explanation for easy understanding .

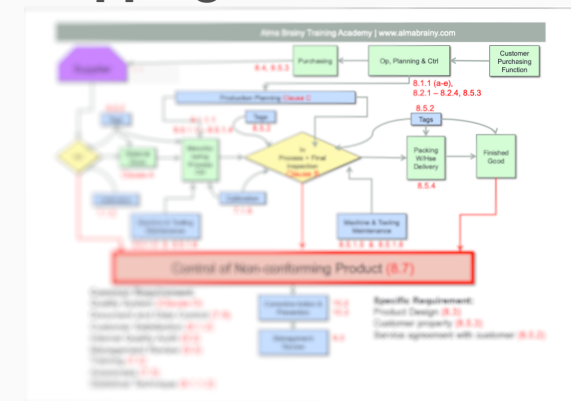
Clause Categorisation

- For better understanding each clause has been categorised as the following:-
 - Carry forward from previous standard.
 - Modified clauses from previous standard.
 - Newly introduced clause.

Bolded Text

- Some wordings are printed in bold.
- This indicates additional and/or new requirements added into the the standard.

Mapping of Each Clause



Each clause is mapped with its relevant operation in in the entire manufacturing process

SYNOPSIS

SPC

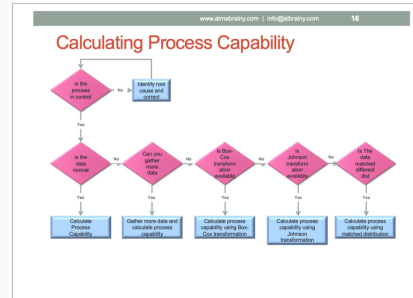
1-day course
in-house
0900-1700
25pax (max)

OVERVIEW

- Training duration reduced to **one-day**.
- All basic training content like mathematical calculation, basic concept of statistics are dropped.
- Focus is given to SPC application and implementation in manufacturing industry.
- A complete review of how to deal with day to day issues related to SPC understanding and application.

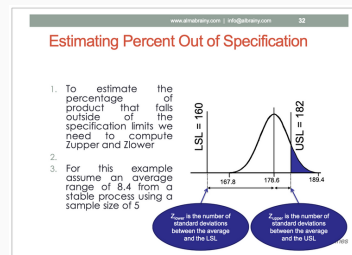
KEY DELIVERABLES

LEARN TIPS AND TACTICS



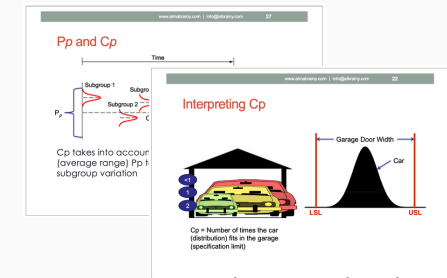
- Not all process has a capability index. Learn at what scenario a capability index **shall** and **shall not** be calculated.
- Understand the process flow in order to deal with **abnormal data** before calculating process capability.
- Learn how to answer **customer** and/or **auditor** if they insist for capability index.

MANIPULATING CPK INDEX



- Make full use of your Cpk index. Predict the yield trend and/or your supplier delivery performance by just evaluating the Cpk value.

PICTORIAL EXPLANATION



- Easy to understand using pictorial explanation to **calculate** and **differentiate** Cp, Cpk and Pp, Ppk.
- Thoroughly explained the usage of Cpk or Ppk in PPAP submission.

MAP THE CONTROL CHART

The screenshot shows a software interface with a table for 'Overview of Control Chart' and an 'Example of U Chart Application' section. The table has columns for 'Variable Data' and 'Attribute Data', and rows for 'Xbar-S Chart', 'Xbar-R Chart', 'I-MR Chart', 'NP Chart', and 'P Chart'. The 'Example of U Chart Application' section contains three numbered points describing the application of U charts in a manufacturing context.

- It is wrong to say only process with variables data can be control via SPC.
- Learn various types of control chart and its utilization

SYNOPSIS

MSA

1-day course
in-house
0900-1700
25pax (max)

OVERVIEW

- Training duration reduced to **one-day**.
- All basic training content like mathematical calculation, basic calculation in MSA are dropped.
- Focus is given on interpreting MSA results via 6-pax graphs.
- A complete study on attribute MSA (new requirements in IATF 16949).

KEY DELIVERABLES

VARIABLES MSA RESULT INTERPRETATION

- A complete guide on how to interpret the Variables MSA result together with examples and graphical explanation.
- Example are given for both "Good" and "Bad" condition.

FULL UNDERSTANDING OF ATTRIBUTE MSA (NEW REQUIREMENT IN IATF 16949)

- Attribute MSA has been made mandatory in IATF 16949.
- Focus is given on performing attribute MSA and interpreting the results.
- Excecise on calculating Kappa value.

SYNOPSIS

FMEA

2-day course (or 1-day course for AIAG FMEA) in-house
0900-1700
25pax (max)

OVERVIEW

- New course that requires two-full day of training.
- Focus is given on the new elements in VDA-AIAG manual.
- Training is done in a workshop-based environment.
- Example of an actual VDA-AIAG VDA is shared with the participants..

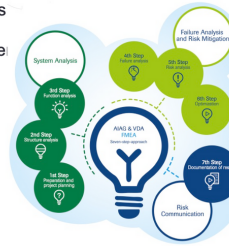
KEY DELIVERABLES

INTRODUCING THE 7 STEPS APPROACH

The 7 Steps Approach

- The revised FMEA process is now represented in six steps against the normal 7 step approach.

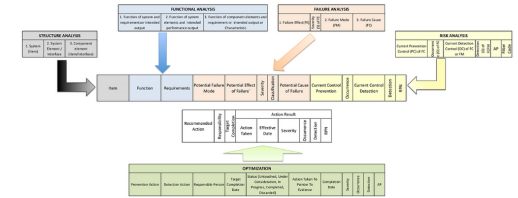
 - i. Step 1: Scope, Definition and Project Planning
 - ii. Step 2: Structure Analysis
 - iii. Step 3: Function Analysis
 - iv. Step 4: Feature Analysis
 - v. Step 5: Risk Analysis
 - vi. Step 6: Optimization
 - vii. Step 7: Documentation



- Learn the 7 steps of FMEA approach as introduced by VDA & AIAG.
- Construct the FMEA via these steps.

VDA-AIAG FMEA MAPPING

Comparison Between 4th Edition AIAG FMEA and AIAG VDA FMEA 1st Edition



- FMEA mapping is the easiest way to help participant to understand how is the new VDA-AIAG FMEA to be constructed.

FULL EXPLANATION ON AP TABLE (COPY PROVIDED)

Recommended AP Table

Effect	Ability to Detect	Ability to Prevent	ACSIAG Severity (S)	Comments
Very High	8.0	1.0	10	No
	7.0	2.0	9	
	6.0	3.0	8	
	5.0	4.0	7	
High	4.0	5.0	6	Product or Part Effect
	3.0	6.0	5	
	2.0	7.0	4	
	1.0	8.0	3	
Medium	4.0	5.0	2	Product or Part Effect
	3.0	6.0	1	
	2.0	7.0	0	
	1.0	8.0	0	
Low	4.0	5.0	0	No
	3.0	6.0	0	
	2.0	7.0	0	
	1.0	8.0	0	

- RPN has been replaced by AP table.
- Full analysis and explanation on understanding the AP table.

REDEFINING S,O & D (COPIES PROVIDED)

Effect	Severity (S)	Occurrence (O)	Prevention (D)	Comments
Very High	10	1	1	Blank until filled in by user
	9	2	2	
	8	3	3	
	7	4	4	
High	6	5	5	Blank until filled in by user
	5	6	6	
	4	7	7	
	3	8	8	
Medium	2	9	9	Blank until filled in by user
	1	10	10	
	0	11	11	
	0	12	12	
Low	0	13	13	Blank until filled in by user
	0	14	14	
	0	15	15	
	0	16	16	

- S,O & D have been completely redefined.
- Each definition will be explained thoroughly.

SYNOPSIS

APQP & PPAP

1-day course for each in-house

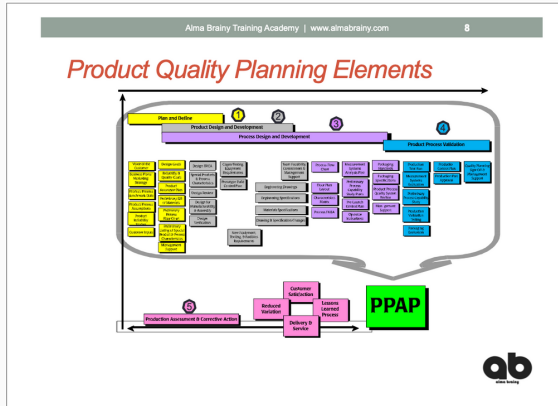
0900-1700

25pax (max)

OVERVIEW

- Training duration reduced to **one-day**.
- APQP and PPAP are interrelated, thus these tools are now combined into 1 single course (1 day each course)
- Focus is given on 5 phases of APQP and how it relates to PPAP requirements.
- Real example of APQP & PPAP will be reviewed.

KEY DELIVERABLES



COMBINING APQP AND PPAP AS ONE COURSE

- Combine APQP and PPAP in one course to ensure fluidity of knowledge transfer within these two subject.
- Map how and where the PPAP element take place throughout the five phases of APQP.

SUMMARIZING THE BLUE BOOKS

- All the important points from the AIAG blue books were summarised, highlighted and presented in point form for easy understanding.

Alma Brany Training Academy www.alma-brany.com 41	
Section 3 – Customer Notification	1 - Use of other construction or material than was used in the previously approved part or product
	2 - Production from new or modified tools (except perishable tools), dies, molds, patterns, etc. including additional or replacement tooling
	3 - Production following upgrade or rearrangement of existing tooling or equipment
	4 - Production from tooling and equipment transferred to a different plant site or from an additional plant site
	5 - Change of supplier for parts, non-equivalent materials, or services (e.g. heat treating, plating)
	6 - Product produced after the tooling has been inactive for volume production for twelve months or more
	7 - Product and process changes related to components of the production product manufactured internally or manufactured by suppliers
	8 - Change in test / inspection method - new technique (no effect on acceptance criteria)
	9 - New source of raw material from new or existing supplier
	10 - Change in product appearance attributes

The image shows a 'PPAP Submission Checklist' form from TRW Automotive. A yellow box highlights 'TRW PPAP Elements' on the right side of the form. The checklist includes various items such as 'Product Characteristics Matrix', 'Control Plan', 'Manufacturing Feasibility Sign-off', and 'Customer Approval'. The form is used to track the completion of various PPAP requirements.

REVIEW OF ACTUAL APQP & PPAP

- Several PPAP example from various manufacturer and automaker will be reviewed.
- Lesson learnt from these APQP and PPAP are to be discussed with participants.

GET THIS BOOKLET FOR FREE

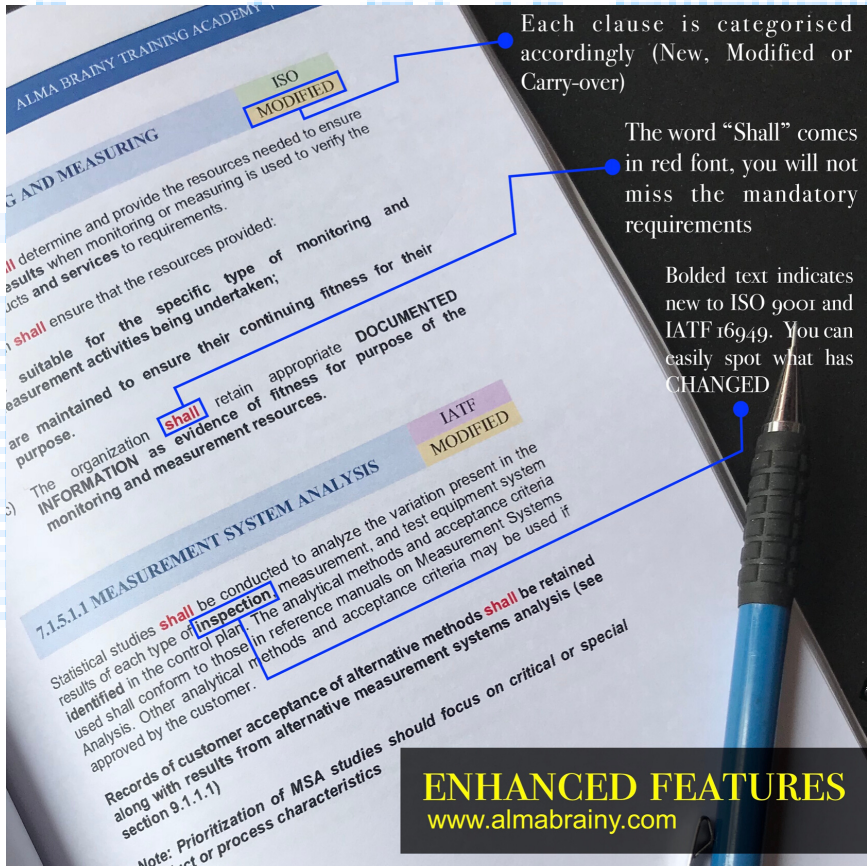


info@albrainy.com
www.almabrainy.com



NEW LOOK
ENHANCED FEATURES
AVAILABLE AT WWW.ALMABRAINY.COM

by enrolling any 4 of the 6 course



Each clause is categorised accordingly (New, Modified or Carry-over)

The word "Shall" comes in red font, you will not miss the mandatory requirements

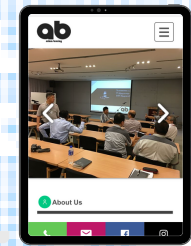
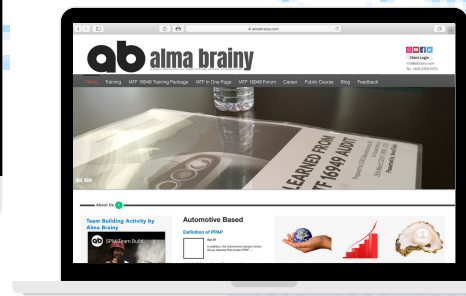
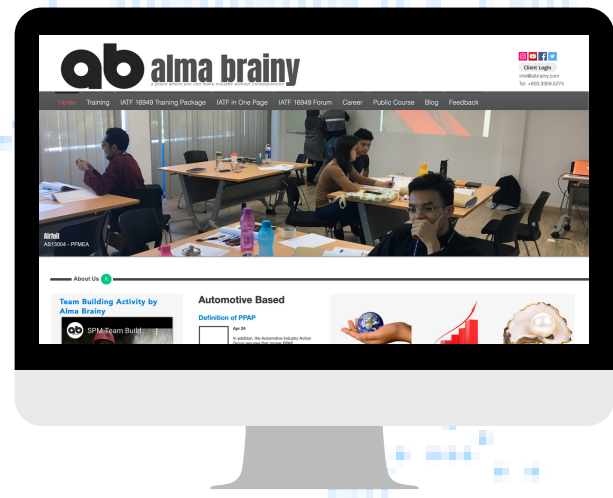
Bolded text indicates new to ISO 9001 and IATF 16949. You can easily spot what has CHANGED

ENHANCED FEATURES
www.almabrainy.com

CONTACT US TO ENROL



info@albrainy.com
www.almabrainy.com



visit us at
www.almabrainy.com drop an
email at info@albrainy.com or
send a whatsapp to
018.667.2110

MSA